

2/2 WAY LATCHING SOLENOID VALVE (PILOT OPERATED), G 1/2"

COMMON FEATURES

Media: water, oil, air

Ambient temperature: -10°C ÷ +50°C

Body material: brass (CW617N EN 12165)

Operator material: stainless steel tube, brass plunger

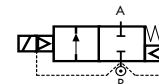
Protection class: IP 65 (with connector and gasket)

NOTES

The valve has been tested with supply set of 8 batteries type AA obtaining the following performances:

- 28.000 cycles (refer to batteries life time, after that batteries need to be replaced)
- pulse time 20 ÷ 50 ms

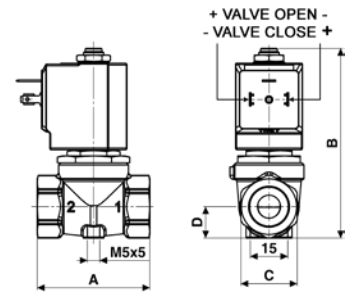
TYPE: LD266-



Normally Closed



DIMENSIONS & WEIGHTS		LD266
G connection	[ISO 228]	1/2"
A	[mm]	54
B	[mm]	89
C	[mm]	Hex 27
D	[mm]	15
weight	[kg]	0.4



Flow direction overseat 1 → 2

GENERAL PURPOSE

VALVE	nominal Ø	flow rate Kvs	OPD			COIL	
			min.	max. AC	max. DC	class 'H'	
code	[mm]	[l/min]	[barg]	[barg]	[barg]	code	[Volts/Hz]
LD266DBU	10.5	25	0.1	—	5	70T1	6v DC

LD266DBU - NBR seal -

Media temperature: -10°C ÷ +90°C

Operator seal material: foodgrade FKM

Diaphragm material: NBR

Coil power: DC 6w

GENERAL PURPOSE

VALVE	nominal Ø	flow rate Kvs	OPD			COIL	
			min.	max. AC	max. DC	class 'H'	
code	[mm]	[l/min]	[barg]	[barg]	[barg]	code	[Volts/Hz]
LD266DVU	10.5	25	0.1	—	5	70T1	6v DC

LD266DVU - FKM seal -

Media temperature: -10°C ÷ +130°C

Operator seal material: foodgrade FKM

Diaphragm material: EPDM

Coil power: DC 6w

GENERAL PURPOSE

VALVE	nominal Ø	flow rate Kvs	OPD			COIL	
			min.	max. AC	max. DC	class 'H'	
code	[mm]	[l/min]	[barg]	[barg]	[barg]	code	[Volts/Hz]
LD266DEU	10.5	25	0.1	—	5	70T1	6v DC

LD266DVU - EPDM seal -

Media temperature: -10°C ÷ +120°C

Operator seal material: foodgrade EPDM

Diaphragm material: EPDM

Coil power: DC 6w