

2/2 WAY PILOT OPERATED SOLENOID VALVE, G 1/4" ÷ G 1"

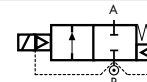
COMMON FEATURES

Media: water, oil, air
 Media temperature: -10°C ÷ +90°C
 Ambient temperature: -10°C ÷ +50°C
 Body material: brass (CW617N EN 12165)
 Operator material: stainless steel
 Operator seal and diaphragm material: NBR
 Protection class: IP 65 (with connector and gasket)

OPTIONS

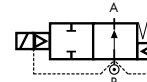
FKM seal, temperature max. 130°C (e.g. code B205DVZ)
 EPDM seal, temperature max. 120°C (e.g. code B204DEZ)
 Electroless nickel plating treatment (e.g. code B205DBZK)
 NPT connection on request, minimum batch may be required (e.g. code RB205DBZN)
 UL approved coils (e.g. code 220R)
 Speed control screw only for type B206-, B222-, RB206- and RB222- (e.g. code B206DBYV / RB222DBYV)

TYPE: B203÷B222



Normally Closed

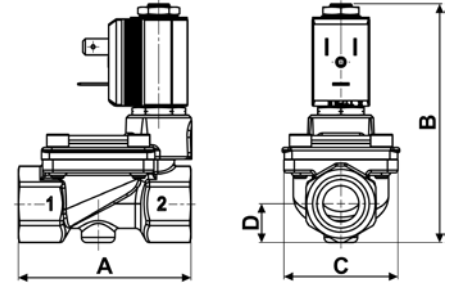
TYPE: RB203÷RB222



Normally Open



DIMENSIONS & WEIGHTS		B203 B204	B205	B206 compact	B206	B222	RB203 RB204	RB205	RB206 compact	RB206	RB222
G connection	[ISO 228]	1/4" 3/8"	1/2"	3/4"	3/4"	1"	1/4" 3/8"	1/2"	3/4"	3/4"	1"
A	[mm]	67	67	82	96	96	67	67	82	96	96
B	[mm]	90	90	105	115	115	92.5	92.5	107.5	117.5	117.5
C	[mm]	45.6	45.6	51.6	72	72	45.6	45.6	51.6	72	72
D	[mm]	15	15	20.25	23	23	15	15	20.25	23	23
weight	[kg]	0.4	0.4	0.6	1.2	1.2	0.4	0.4	0.6	1.2	1.2



Flow direction overseat 1 → 2

VALVE	nominal Ø	flow rate Kvs	min.	OPD		COILS	
				max. AC	max. DC	code	[Volts/Hz]
code	[mm]	[l/min]	[barg]	[barg]	[barg]	code	[Volts/Hz]
B203DBZ	13	26	0.3	16	16	2250	24v DC
B204DBZ	13	55	0.3	16	16	2200	24v 50/60Hz
B205DBZ	13	63	0.3	16	16	2400	110v 50Hz - 120v 60Hz
B206DBX comp.	21	100	0.3	16	16	2600	200v 50Hz - 220v 60Hz
B206DBY ①	25	140	0.3	16	16	2700	230v 50Hz - 240v 60Hz
B222DBY	25	160	0.3	16	16		

B203 ÷ B222 - NBR seal, NC -

Coil power: AC 10vA (holding)
 AC 16vA (inrush)
 DC 7w

OPTIONS

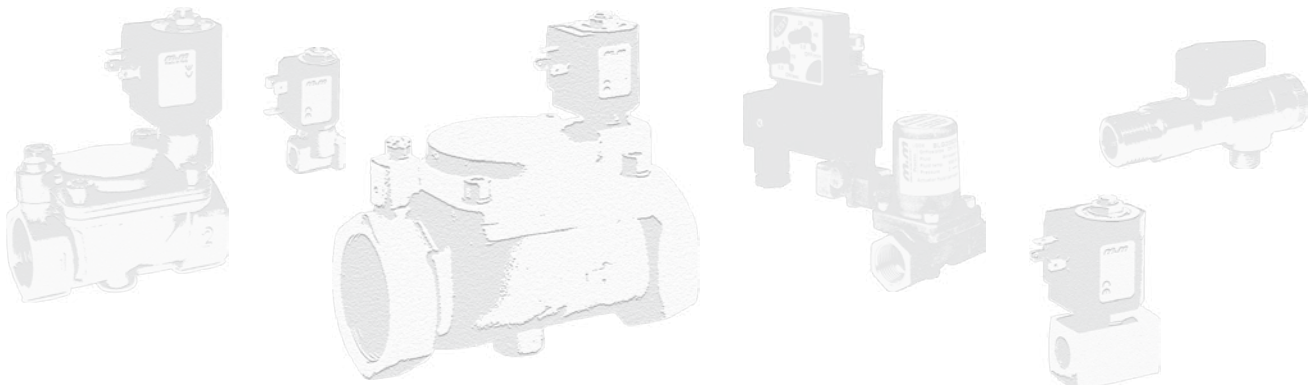
Manual override (e.g. code B204DBZM)

VALVE	nominal Ø	flow rate Kvs	min.	OPD		COILS	
				max. AC	max. DC	code	[Volts/Hz]
code	[mm]	[l/min]	[barg]	[barg]	[barg]	code	[Volts/Hz]
RB203DBZ	13	26	0.3	16	16	2250	24v DC
RB204DBZ	13	55	0.3	16	16	2200	24v 50/60Hz
RB205DBZ	13	63	0.3	16	16	2400	110v 50Hz - 120v 60Hz
RB206DBX comp.	21	100	0.3	16	16	2600	200v 50Hz - 220v 60Hz
RB206DBY ①	25	140	0.3	16	16	2700	230v 50Hz - 240v 60Hz
RB222DBY	25	140	0.3	16	16		

RB203 ÷ RB222 - NBR seal, NO -

Coil power: AC 10vA (holding)
 AC 16vA (inrush)
 DC 7w

① Product subject to phase-out, please contact M&M Sales Department for availability



GENERAL PURPOSE

GENERAL PURPOSE