

3/2 WAY DIRECT ACTING SOLENOID VALVE, G 1/8"

COMMON FEATURES

Media Ⓢ : water, oil, air

Media temperature: $-10^{\circ}\text{C} \rightarrow +130^{\circ}\text{C}$

Ambient temperature: $-10^{\circ}\text{C} \rightarrow +50^{\circ}\text{C}$

Body material: brass (CW719R EN 12165) low lead content

Orifice material: stainless steel (1.4305 EN 10088/AISI 303)

Operator material: stainless steel

Seal material: foodgrade FKM

Protection class: IP 65 (with connector and gasket)

OPTIONS

EPDM seal, temperature max. 120°C (e.g. code RB397CEC)

Electroless nickel plating treatment (e.g. code B397CVCK)

NOTES

Ⓢ Valve suitable for contact with food media as per the EEC Directives and Regulations. For more specific information, please contact M&M Sales Department.

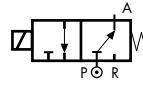
| DIMENSIONS & WEIGHTS | | B397 | RB397 | SB397 |
|----------------------|-----------|------|-------|-------|
| G connection | [ISO 228] | 1/8" | 1/8" | 1/8" |
| A | [mm] | 30 | 30 | 30 |
| B | [mm] | 67.8 | 72.5 | 67.8 |
| C | [mm] | 18 | 18 | 18 |
| D | [mm] | 7 | 7 | 7 |
| weight | [kg] | 0.15 | 0.16 | 0.15 |

| VALVE | nominal \varnothing | flow rate Kvs | OPD | | | COILS | |
|----------------|-----------------------|---------------|--------|---------|---------|-------|-----------------------|
| | | | min. | max. AC | max. DC | code | [Volts/Hz] |
| code | [mm] | [l/min] | [barg] | [barg] | [barg] | code | [Volts/Hz] |
| B397CVA | 1.0 | 0.5 | 0 | 18 | 18 | 2250 | 24v DC |
| B397CVB | 1.2 | 0.7 | 0 | 15 | 15 | 2200 | 24v 50/60Hz |
| B397CVC | 1.5 | 1.0 | 0 | 10 | 10 | 2400 | 110v 50Hz - 120v 60Hz |
| B397CVE | 2.0 | 1.9 | 0 | 5 | 5 | 2600 | 200v 50Hz - 220v 60Hz |
| B397CVH | 3.0 | 3.5 | 0 | 2 | 2 | 2700 | 230v 50Hz - 240v 60Hz |

| VALVE | nominal \varnothing | | flow rate Kvs | OPD | | | COILS | |
|-----------------|-----------------------|-------------------|---------------|--------|---------|---------|-------|-----------------------|
| | 1 \rightarrow 2 | 1 \rightarrow 3 | | min. | max. AC | max. DC | code | [Volts/Hz] |
| code | [mm] | [mm] | [l/min] | [barg] | [barg] | [barg] | code | [Volts/Hz] |
| SB397CVB | 1.2 | 1.7 | 0.7 | 0 | 6 | 3 | 2250 | 24v DC |
| SB397CVC | 1.5 | 1.7 | 1.0 | 0 | 4.5 | 2 | 2200 | 24v 50/60Hz |
| | | | | | | | 2400 | 110v 50Hz - 120v 60Hz |
| | | | | | | | 2600 | 200v 50Hz - 220v 60Hz |
| | | | | | | | 2700 | 230v 50Hz - 240v 60Hz |

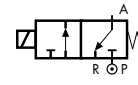
| VALVE | nominal \varnothing | flow rate Kvs | OPD | | | COILS | |
|-----------------|-----------------------|---------------|--------|---------|---------|-------|-----------------------|
| | | | min. | max. AC | max. DC | code | [Volts/Hz] |
| code | [mm] | [l/min] | [barg] | [barg] | [barg] | code | [Volts/Hz] |
| RB397CVA | 1.0 | 0.5 | 0 | 15 | 12 | 2250 | 24v DC |
| RB397CVB | 1.2 | 0.7 | 0 | 15 | 12 | 2200 | 24v 50/60Hz |
| RB397CVC | 1.5 | 1.0 | 0 | 10 | 8 | 2400 | 110v 50Hz - 120v 60Hz |
| RB397CVE | 2.0 | 1.9 | 0 | 8 | 6 | 2600 | 200v 50Hz - 220v 60Hz |
| RB397CVG | 2.5 | 2.5 | 0 | 4 | 4 | 2700 | 230v 50Hz - 240v 60Hz |
| RB397CVH | 3.0 | 3.5 | 0 | 3.5 | 3.5 | | |

TYPE: SB397



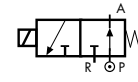
Normally Open

TYPE: B397

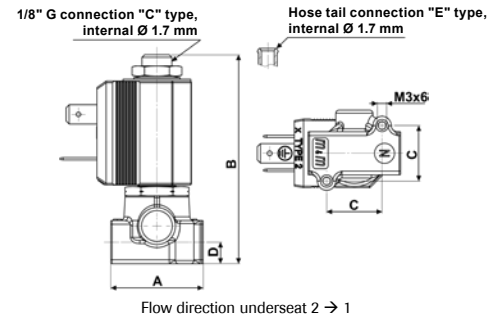


Normally Closed

TYPE: RB397



Normally Open



Flow direction underseat 2 \rightarrow 1

B397 - FKM seal, NC

Coil power: AC 10va (holding)
AC 16va (inrush)
DC 7w

OPTIONS

Manual override (e.g. code B397CVBM)

Armature tube with hose tail \varnothing 6 mm (e.g. code B397EVE)

UL approved coils (e.g. code 270R)

SB397 - FKM seal, 2nd SERVICE -

Coil power: AC 10va (holding)
AC 16va (inrush)
DC 7w

OPTIONS

Manual override (e.g. code SB397CVCM).

NOTES

Flow direction: **OFF** 3 \rightarrow 1 - **ON** 1 \rightarrow 2

RB397 - FKM seal, NO

Coil power: AC 10va (holding)
AC 16va (inrush)
DC 7w

GENERAL PURPOSE

AUTOMATION

AUTOMATION