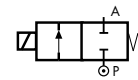


2/2 WAY DIRECT ACTING SOLENOID VALVE, G 1/4" ÷ G 1/2"

COMMON FEATURES

Body material: brass (CW617N EN 12165)
 Operator material: stainless steel
 Protection class: IP 65 (with connector and gasket)

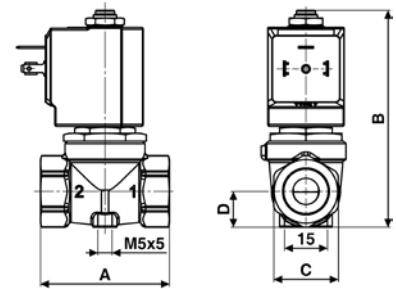
TYPE: D237/238/239



Normally Closed



DIMENSIONS & WEIGHTS		D237	D238	D239
G connection	[ISO 228]	1/4"	3/8"	1/2"
A	[mm]	54	54	54
B	[mm]	89	89	89
C	[mm]	HEX 27	HEX 27	HEX 27
D	[mm]	15	15	15
weight	[kg]	0.45	0.4	0.4



Flow direction overseat 1 → 2

VALVE	nominal Ø	flow rate Kvs	min.	OPD		COILS	
				max. AC	max. DC	code	[Volts/Hz]
code	[mm]	[l/min]	[barg]	[barg]	[barg]	code	[Volts/Hz]
D237DVU	10.5	21	0	0.4	0.2	7250	24v DC
D238DVU	10.5	25	0	0.4	0.2	7200	24v 50/60Hz
D239DVU	10.5	25	0	0.4	0.2	7400	110v 50Hz - 120v 60Hz
						7600	200v 50Hz - 220v 60Hz
						7700	230v 50Hz - 240v 60Hz

D237/238/239DVU - FKM seal, NC -

Media: water, oil, air
 Media temperature: -10°C ÷ +130°C
 Ambient temperature: -10°C ÷ +50°C
 Seal material: FKM
 Coil power: AC 18vA (holding)
 AC 36vA (inrush)
 DC 14w

OPTIONS

NBR seal, temperature max. 90°C (e.g. code D237DBU)
EPDM seal, temperature max. 120°C (e.g. code D239DEU)

VALVE	nominal Ø	flow rate Kvs	min.	OPD		COILS	
				max. AC	max. DC	code	[Volts/Hz]
code	[mm]	[l/min]	[barg]	[barg]	[barg]	code	[Volts/Hz]
D238DVL	4.0	6	0	8	5	7250	24v DC
D238DVN	5.0	7.5	0	5	2	7200	24v 50/60Hz
D238DVP	6.0	8.5	0	3.5	1.1	7400	110v 50Hz - 120v 60Hz
D239DVH	3.0	4.5	0	17	12	7600	200v 50Hz - 220v 60Hz
D239DVL	4.0	6	0	8	5	7700	230v 50Hz - 240v 60Hz
D239DVN	5.0	7.5	0	5	2		
D239DVP	6.0	8.5	0	3.5	1.1		

D238/239 - FKM seal, NC -

Media: water, oil, air
 Media temperature: -10°C ÷ +130°C
 Ambient temperature: -10°C ÷ +50°C
 Orifice material: stainless steel
 Seal material: FKM
 Coil power: AC 18vA (holding)
 AC 36vA (inrush)
 DC 14w

OPTIONS

NBR seal, temperature max. 90°C (e.g. code D239DBP)
EPDM seal, temperature max. 120°C (e.g. code D238DEP)

NOTES

Same operator as D262/263DV-

VALVE	nominal Ø	flow rate Kvs	min.	OPD		COILS	
				max. AC	max. DC	code	[Volts/Hz]
code	[mm]	[l/min]	[barg]	[barg]	[barg]	code	[Volts/Hz]
D238DLH	3.0	4.5	0	9	8	7251	24v DC
D239DLI	3.5	5.0	0	9	5	7201	24v 50/60Hz
D238DLN	5.0	7.5	0	5	2	7401	110v 50Hz - 120v 60Hz
						7601	200v 50Hz - 220v 60Hz
						7701	230v 50Hz - 240v 60Hz

D238/239 - FILLED PTFE seal, NC -

Media: steam
 Media temperature: -10°C ÷ +180°C
 Ambient temperature: -10°C ÷ +70°C
 Orifice material: stainless steel
 Seal material: Sigodur (filled PTFE)
 Coil power: AC 18vA (holding)
 AC 36vA (inrush)
 DC 14w

NOTES

Seamless tube as standard
 Same operator as D262/263DL-