

## 2/2 WAY DIRECT ACTING SOLENOID VALVE, G 1/4"

### COMMON FEATURES

Media: water, oil, air

Media temperature: -10°C ÷ +130°C

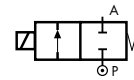
Ambient temperature: -10°C ÷ +50°C

Body material: brass (CW617N EN 12165)

Operator material: stainless steel

Protection class: IP 65 (with connector and gasket)

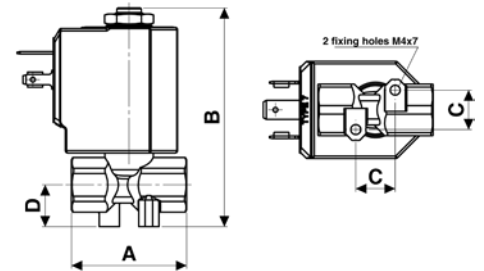
### TYPE: D249



Normally Closed



DIMENSIONS & WEIGHTS		D249
<b>G connection</b>	[ISO 228]	1/4"
<b>A</b>	[mm]	38
<b>B</b>	[mm]	72.1
<b>C</b>	[mm]	13
<b>D</b>	[mm]	13.8
<b>weight</b>	[kg]	0.18



Flow direction overseat 1 → 2

VALVE	nominal Ø	flow rate Kvs	OPD			COILS	
			min.	max. AC	max. DC	code	[Volts/Hz]
code	[mm]	[l/min]	[barg]	[barg]	[barg]	code	[Volts/Hz]
<b>D249DVD</b>	1.7	1.5	0	25	24	7250	24v DC
<b>D249DVF</b>	2.2	2.4	0	18	16	7200	24v 50/60Hz
<b>D249DVH *</b>	3.0	4.5	0	10	6	7400	110v 50Hz - 120v 60Hz
						7600	200v 50Hz - 220v 60Hz
						7700	230v 50Hz - 240v 60Hz

### D249 - FKM seal, NC -

Seal material: FKM

Coil power: AC 18vA (holding)

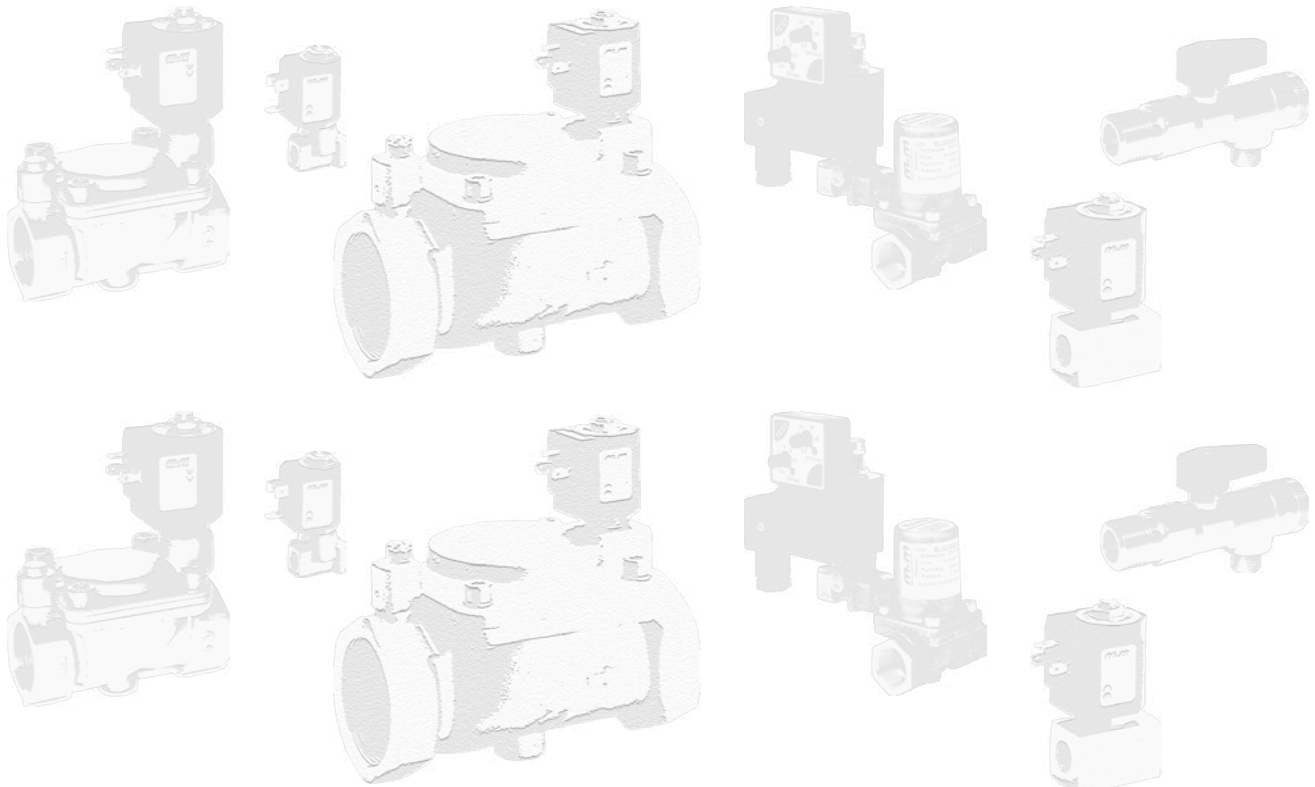
AC 36vA (inrush)

DC 14w

### OPTIONS

EPDM seal, temperature max. 120°C (e.g. code D249DEF)

\* Minimum batch may be required



## AUTOMATIC DRAIN VALVE SYSTEMS WITH PISTON ACTUATED VALVES

Compressed air systems must be engineered to allow condensate to collect at low points, where automatic drainage should be provided.

Condensate is a mixture of: water, oil and dirt, its viscosity increasing with low temperatures.

Normal operation of drain valves manually is time consuming and costly, and the required positions often get forgotten. The ADV overcomes all these problems allowing you to "tune" its operation, through the variable timers, to suit specific system conditions.

### USERS BENEFITS:

- ↳ no maintenance!
- ↳ suitable for use in severe conditions
- ↳ reliable, long life
- ↳ no pressure differential required to operate



## STRAINER FOR CONDENSATE DRAIN

Strainer consisting of a ball valve with filter to be used together with the automatic drain valve. In order to clean and check the filter it is enough to close the valve to isolate it and then unscrew the plug.

### COMMON FEATURES

Media: water, oil, air and inert gases

Media temperature: -10°C ÷ +130°C

Ambient temperature: -10°C ÷ +50°C

Strainer material: brass (CW617N EN 12165)

Ball valve material: chromed brass (EN 5705-65)

Filter material: stainless steel (1.4305 EN 10088/AISI 304)

Seal material: PTFE

Strainer MAX. working pressure: 50 barg

### NOTES

Cap for inspection and cleaning



DIMENSIONS & WEIGHTS		887052-	887054-	887057-	887058-	887059-
<b>A</b>	[thread]	1/2" NPT	1/4" NPT	1/2" BSP	3/8" BSP	1/4" BSP
<b>B</b>	[thread]	1/2" NPT	1/2" NPT	1/2" BSP	1/2" BSP	1/2" BSP
<b>weight</b>	[kg]	0.23	0.23	0.23	0.23	0.23

